



# WHITEC: Your Technology Connection Partner

WHITEC, your Regional Extension Center (REC), provides education and technical assistance to help Wisconsin health care professionals select, implement and achieve meaningful use of electronic health record (EHR) technology. And while we serve all health care professionals in Wisconsin, right now there are financial subsidies for priority primary care providers, for which your practice may qualify.

To improve health care quality and efficiency, the federal government has defined a standard to determine when providers have achieved meaningful use of electronic health records. By meeting the standard, providers become eligible for incentive payments from Medicare and Medicaid beginning in 2011. Starting in 2015, providers who have *not* achieved meaningful use may be subject to financial penalties.

WHITEC, a consortium including MetaStar Inc., the Rural Wisconsin Health Cooperative, the Wisconsin Hospital Association, the Wisconsin Medical Society and the Wisconsin Primary Health Care Association, is here to support Wisconsin health care professionals in achieving meaningful use of EHRs. All Wisconsin providers



may access WHITEC's information and resources, but "priority" primary care providers may receive government subsidies to offset costs.

*Priority providers include:*

- Physicians and other health care professionals with prescribing privileges in small group practices
- Ambulatory clinics connected to a public or critical access hospital
- Community health centers or rural health clinics
- Other providers predominantly serving uninsured, underinsured and medically underserved populations

**If you are a priority primary care provider, visit [www.whitec.org](http://www.whitec.org) today and fill out an application to participate.**



Wisconsin Health Information Technology Extension Center

## The First Step with WHITEC

Once you sign a technical assistance contract with WHITEC, our first step is a readiness assessment to determine where your practice is in the EHR adoption process and what you still need to do to achieve meaningful use of your EHR.



After the initial assessment, we will create custom plans for practices that have already adopted EHRs and are striving for meaningful use as well as for those just beginning the adoption process.

During your readiness assessment and throughout the partnership, you will be intimately involved to ensure that all plans are tailored to your practice's needs.

## What WHITEC Participants Get

WHITEC and your practice will work together so that you receive the custom assistance needed to achieve sustainable skills in the use of an EHR, including:

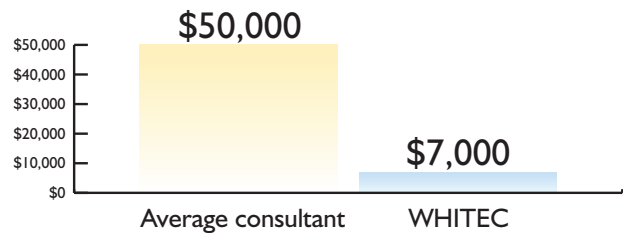


- Onsite assistance with a **dedicated HIT specialist**
- An unbiased, accurate source of EHR information
- A custom project plan
- Assistance with vendors
- Workflow analysis and redesign tools
- Tools for selection, contracting and purchasing
- EHR installation and implementation assistance
- EHR optimization and meaningful use achievement
- Interoperability and health information exchange assistance

## WHITEC's Costs

WHITEC's fees are individualized, depending on practice size and EHR status. Participants that sign a technical assistance contract by July 31, 2010, **or** have membership in a WHITEC consortium organization\* are eligible for discounts on their base fee.

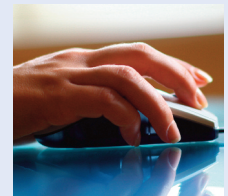
Practices that do not qualify or are not ready to sign a technical assistance contract may purchase an education package with topics such as *Meaningful Use 101*, *Intro to Vendor Selection*, *EHR 101* and more for \$499.



The nationwide average for a consultant providing the same services as WHITEC to a 10-physician practice is \$50,000. WHITEC's average cost for a 10-physician practice not using EHR may be as low as \$7,000. These are average costs. All costs are subject to change, and costs will vary by individual needs.

## To Learn More or to Get Started Today

To learn more about WHITEC, visit [www.whitec.org](http://www.whitec.org) and view the *Understanding WHITEC* webinar or call us at 1-866-710-4212.



**Apply to participate by completing an online application at [www.whitec.org](http://www.whitec.org)**



\* Membership discount applies if at least 60 percent of providers are members of the Wisconsin Medical Society, Wisconsin Primary Health Care Association, Wisconsin Hospital Association or the Rural Wisconsin Health Cooperative